

# Professional cleaning & care



## 1. Preparation

First, free the floor from dust and coarse dirt to avoid unwanted scratches.

Protect adjacent walls, water-sensitive baseboards (e.g. veneered MDF moldings) as well as doors or immovable furniture with adhesive tape.

Our Recommendation:

Precision masking tape (e.g. Würth's Precision Painter's tape 50 mm x 50 m)

Test the compatibility of the adhesive tape in advance using an inconspicuous surface area.

## 2. Wet Clean

Mixture of 5 L hot water + 250 ml Schotten & Hansen Wood Soap + 100 ml Orange Cleaner.

Coverage depending on the condition and absorbency of the wood surface: approx. 1 mixture / 30 m<sup>2</sup>

1. Mopping: Spread cleaning mixture very wet and evenly with a mop, allow a short exposure time of max. 5 minutes.
2. Cleaning the dirt with polishing machine, wet in wet, Attachment: Shampoo brush; Optional: hand brush.
3. Mopping: Remove water and dirt with clean mop, rinse mop repeatedly in clean water. Alternatively, a wet vacuum cleaner can be used.

Note: Ensure sufficient drying time. Optimal: Overnight. The drying time can be shortened by good ventilation and by activating the underfloor heating.

ATTENTION: Please do not use microfiber cloths, we recommend a cotton mop.



## 3. Intermediate Polish

Polish the floor using a polishing machine attachment sisal brush; Optional: Beige polishing pad attachment.

Note: Be sure to use a clean sisal brush, which has no residue oils.

**Schotten  
& Hansen**

## 4. Applying our Wood Polish

Apply a thin layer of Schotten & Hansen Wood Polish with a wiping brush and spread evenly. ( Application range: approx. 1 L / 60 m<sup>2</sup>)

Work the Wood Polish into the surface immediately (without waiting time) with a polishing machine and sisal brush until there is no more residual material.

Note: Ensure sufficient drying time of approx. 8 hours. Optimal: Overnight. The drying time can be reduced to 3-5 hours by good ventilation and by activating underfloor heating.



## 5. Final Polish

First, it is recommended to polish the corners and all the areas that you cannot reach with the polishing machine, by hand with the beige polishing pad.

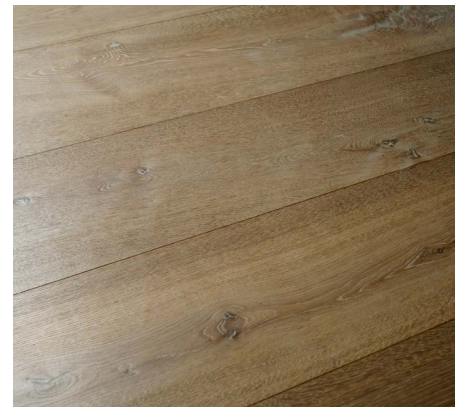
Polish the floor using a polishing machine attachment sisal brush;  
Optional: Beige polishing pad attachment.

## 6. Important Notes

After the application of the Wood Polish, the floor should not be walked on for at least 24 hours, preferably 48 hours.

For safety information on the Wood Polish, please refer to the Safety Data Sheet.

After installation and initial maintenance by a specialised contractor, we recommend that the floor be treated gently for 6 to 8 weeks. During this time, the wooden floor should, if possible, only be dry cleaned, protected as far as possible from moisture, dirt, mechanical stress and not covered (e.g. by carpets). These measures ensure for the complete curation of the applied ingredients.



All required materials, tools and other accessories are available for purchase from Schotten & Hansen.

If you have any questions, please contact our service department at  
+49 (0) 08861-90804 - 0 or by e-mail  
at [service@schotten-hansen.com](mailto:service@schotten-hansen.com)

**Schotten  
& Hansen**